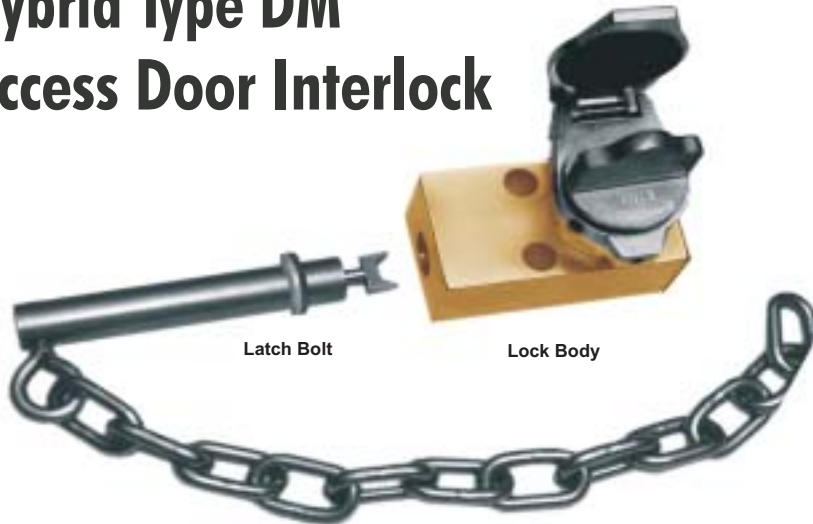


# SPECIFICATION DATA SHEET 9.4

## Hybrid Type DM Access Door Interlock



### Hybrid Type DM Interlock

The type DM access door interlock is designed for hinged doors, manhole covers, sliding doors or any sort of hatch or lid. It is well suited for loose fitting doors or hatches that will not accommodate a precise fitting door lock. The type DM consists of a main body and a latch bolt with twelve links of 316 stainless steel chain.

The lock body can be mounted to the equipment and the chain can be bolted or welded to the door or hatch with the proper amount of "slack" for the latch bolt to reach the DM lock body.

Under normal conditions the key is upstream in the interlock scheme and the chain/bolt is trapped in the lock securing the door in the closed position. The latch bolt cannot be released until the key is inserted and turned. Only then can the latch bolt be rotated 1/4 turn and released from the lock thereby trapping the key. The door or hatch must be closed and the latch bolt must be returned to the lock body in order to free the key.

The interlock housing is made from bronze. The key, latch bolt and all internal parts are constructed from 316 stainless steel. The latch bolt has a gasket to protect against the introduction of dust and dirt into the interlock body.

#### OPTIONS:

- **Stamp Key Interchange** - specify an alphanumeric code to be stamped on the cylinder face and the key (e.g. A1, A2, B1, etc.). See Data Sheets 11.1, 11.3 and 12.1 for details.
- **Multi-Cylinder** - up to 2 cylinders available. Please specify E or W key removable position for each cylinder.
- **Key Removable** - the single cylinder type DM is always built key removable "E". If the second cylinder is to contain a personnel key that is available when the door is unlocked, designate that cylinder as key removable W.
- **Latch Bolt with Spring and Mounting Bracket** - See Data Sheet 9.4A for details.
- **Dust Covers** - See Data Sheet 11.1 for details.
- **Mounting Bolts** - See Data Sheet 11.2 for details.
- **DM2 Adapter Plate** - See Data Sheet 9.4A for details.

The Type DM interlock should not be used to align the door, or be the latching means for holding the door in the closed position.

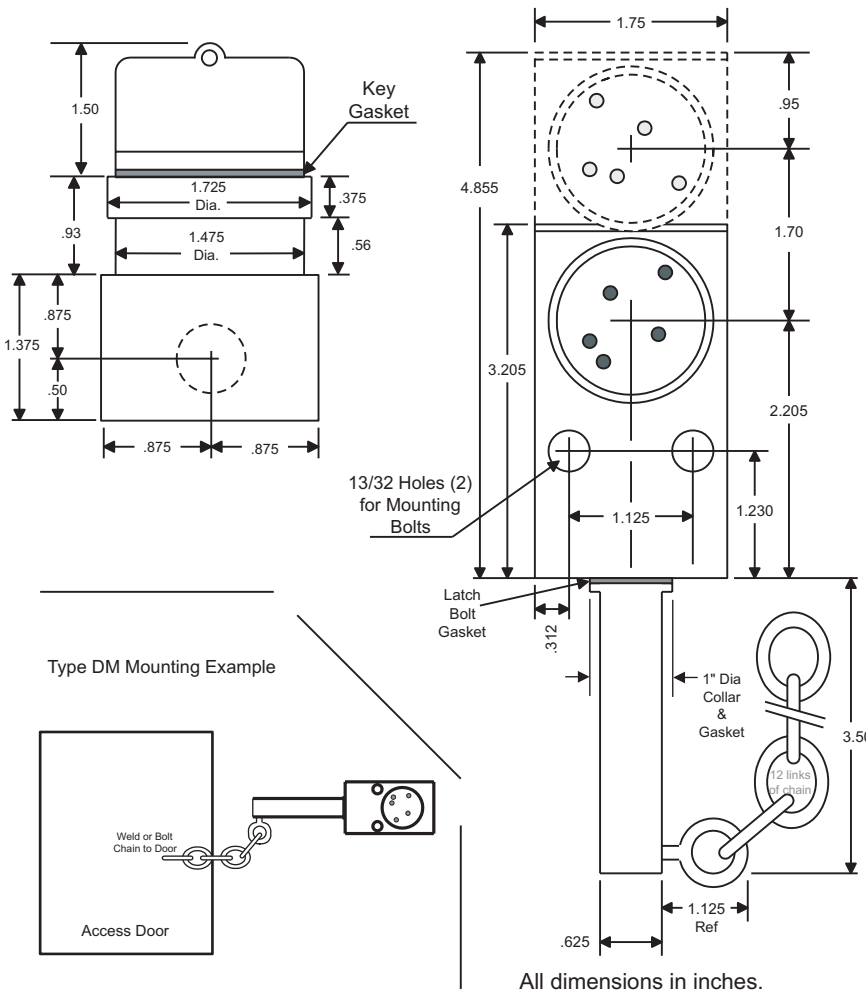
Kirk Key Interlock Company

211 Wetmore Ave. S.E., Massillon, OH 44646

Phone: 330.833.8223 • Fax: 330.833.1528

Toll Free: 1.800.438.2442

#### SPECIFICATIONS\*:



All dimensions in inches.