



SPECIFICATION DATA SHEET 1.15

Type U - End Mounted



Type U Interlock

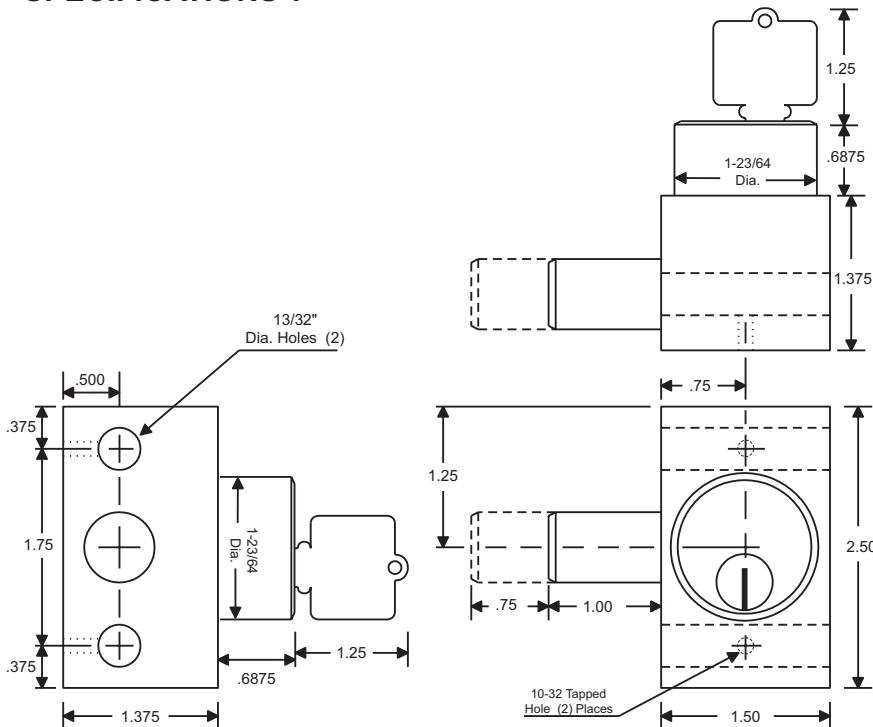
The type U interlock is designed for applications where space is limited. It can be fastened through the lock body with 3/8" bolts or panel mounted with 10-32 bolts from the back of the lock body.

The locking bolt is 5/8" diameter stainless steel and the throw, or travel, of the locking bolt is 3/4". Lock bolt movement is completely controlled by the rotation of the key.

OPTIONS:

- **Lock Bolt Length** - when ordering, specify the length of the locking bolt in the withdrawn position. Standard lengths are 0", 1/4", 3/8", 1/2", 3/4", and 1". Non-standard lengths are also available. (1" Lock Bolt shown on drawing)
- **Key Removable** - the key is removable when the locking bolt is either in the extended (E) or withdrawn (W) position. Please choose E or W when ordering an interlock. **NOTE:** Key removable E is the most common because the locking bolt is typically extended to block/engage something.
- **Stamp Key Interchange** - specify an alphanumeric code to be stamped on the cylinder face and the key (e.g. A1, A2, B1, etc.). See Data Sheets 3.4 and 4.1 for details.
- **"Opposite Hand"** - See Data Sheet 4.1 for details.
- **Dust Covers** - See Data Sheet 3.1 for details.
- **Housing** - Machined brass bar stock. Also available is stainless steel by special order please contact Kirk Key for pricing and availability.
- **Mounting Bolts** - See Data Sheet 3.2 for details.

SPECIFICATIONS*:



* All Dimensions shown in inches.

Kirk Key Interlock Company
 211 Wetmore Ave. S.E., Massillon, OH 44646
 Phone: 330.833.8223 • Fax: 330.833.1528
 Toll Free: 1.800.438.2442