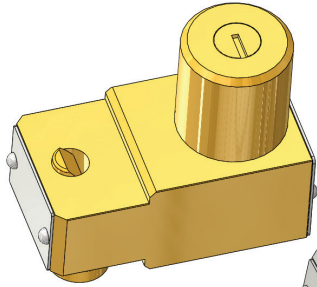


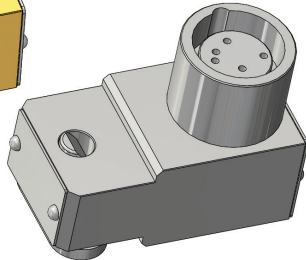
Type DC Access Interlock



Part of the
Sentric Group



SD Series



HD Series

KIRK Type DC access interlocks provide a physical barrier to either partial or full body access points until risk of hazardous energy or moving equipment has been mitigated.

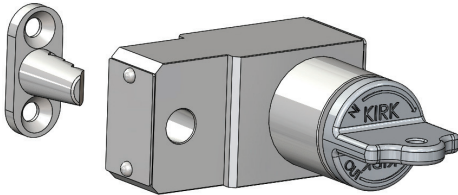
All Type DC interlocks have two parts; a main body with one cylinder and a catch. When the catch is separated from the main body, the key is trapped in the lock. When the door on which the interlock is mounted is properly closed, the catch can be inserted into the main body and the key can be turned and released.

OPERATION

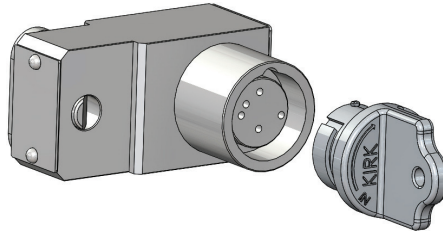
KIRK Type DC interlocks are mechanically operated and suitable for access applications in which hazardous energy or moving equipment is present.

Type DC key operated mechanical access interlock

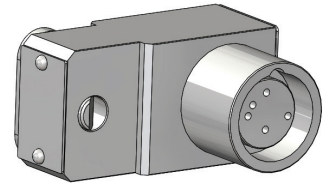
- 1** Key is released, catch is engaged, ensuring access point is locked closed.



- 2** Insert and turn key, which will disengage catch and trap key.




- 3** Catch is disengaged, access point is open, and key is trapped.




For HD multiple cylinder interlocks, all missing keys must be inserted and turned before any trapped keys can be released.

USAGE

KIRK Type DC access interlocks should be used to allow safe access into potentially hazardous areas. KIRK Type DC access interlocks can be used for partial body access. For full body access, a multiple cylinder interlock is recommended to ensure a personnel key can be released to be kept on the person(s) performing maintenance.

 KIRK Type DC interlocks are not recommended for applications in which full body access is necessary as multiple cylinders are not an option for this style interlock, thus not allowing for a personnel key.

 KIRK Type DC interlocks should be utilized in situations where the door and door-frame are ill-fitting, and a degree of latitude is required.


No hazardous substances were used in the manufacturing of the product. The product can be disposed of in standard waste receptacles.


INSTALLATION

The housing of the Type DC should be mounted on the access door and the catch should be mounted on the door frame aligned with the mounting location of the housing.

SD series (brass) interlocks are supplied with a key in each cylinder. These keys are needed during installation of the interlocks. SD series (brass) bolt interlocks with multiple cylinders require the insertion of all keys before the lock bolt can be extended or withdrawn. Do not try to force a multiple cylinder interlock that does not have the correct keys fully inserted in every cylinder!

HD series (stainless steel) interlocks are not sold with keys. Keys must be ordered separately and may be required during the installation process.

 For all interlock systems to maintain system integrity, additional keys must be removed from the system and destroyed or retained by a responsible person. There should only be enough keys to operate the interlock system sequentially. Kirk Key Interlock Company will not be responsible for extra keys left in the interlock system.

 All interlocks and interlock systems must be installed by a competent and qualified person who has read and understood these instructions. Please retain this document in your technical files.

MAINTENANCE

Kirk key interlocks should be periodically lubricated with a small amount of dry powder graphite. DO NOT use oil or grease of any type as these will collect dirt and impede the proper operation of the lock cylinder.

SD SERIES: Apply a small amount of graphite to the key and insert the key into the lock cylinder. Work the key in an out and turn the key several times in order to distribute the graphite inside the lock cylinder.

HD SERIES: Apply a small amount of graphite behind the inner turn shaft. Insert and turn the key a few times in order to distribute the graphite below the lock cylinder.

KIRK offers a Graphite Lubrication kit (part# GL-1) complete with instructions for use.

Protective covers for most products are also available as accessories. Covers can be utilized to protect the lock cylinders when located outdoors or in a demanding environment.

Type DC Access Interlock



Part of the
Sentric Group

TECHNICAL DATA

Type DC	SD Series	HD Series
Interlock Housing	Brass	Stainless Steel
Cylinder Housing	Brass	Stainless Steel
Plug/Inner Turn Shaft	Brass	Stainless Steel
Key Material	Nickel-Silver	Stainless Steel
Key Style	7-Pin Tumbler	Dowel Pin
Latch/Catch	Brass	Stainless Steel
Type of Mounting	Main body is mounted to the moving door and the latch block is mounted to the door frame using suitable fasteners. Refer to drawing for details.	
Temperature Ratings	-65F to +250F	-65F to +700F
Weight	2.45 pounds	2.14 pounds

* Weight based on product with 1 cylinder, no key, accessories, or mounting hardware

APPLICATION

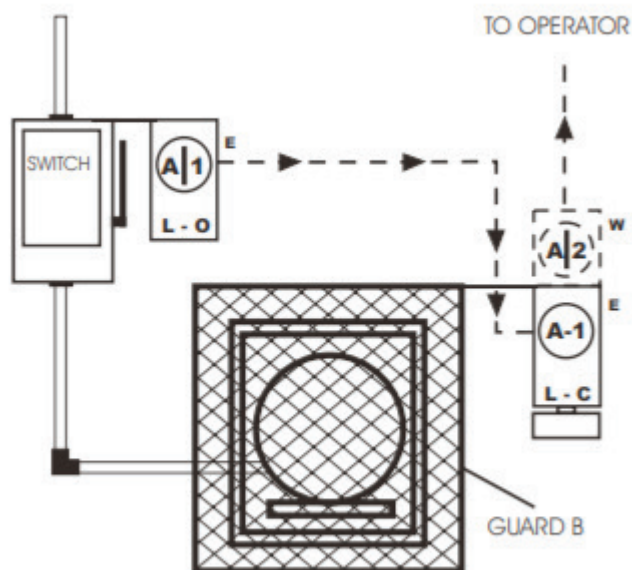
KIRK Type DC interlocks are mechanically operated and suitable for access applications in which hazardous energy or moving equipment is present.

The interlock application scheme 33 from the KIRK scheme book is to prevent the opening of guard B when power is on.

Initial system status: Power is on. Guard B is locked closed and switch is in the closed position. Key A-1 is trapped in the bolt interlock on the switch.

To gain access and begin maintenance on moving equipment, open switch and turn key A-1 in bolt interlock on switch. Key A-1 is now free and switch is locked open. Insert Key A-1 into Type DC L-C (locked closed) interlock on Guard B and turn and unlock. Guard B is now open and Key A-1 is now trapped in Type DC.

If this is full body access, a multiple cylinder interlock is recommended. This allows for Key A-2 to be released and held with the person performing maintenance.



Type DC Access Interlock

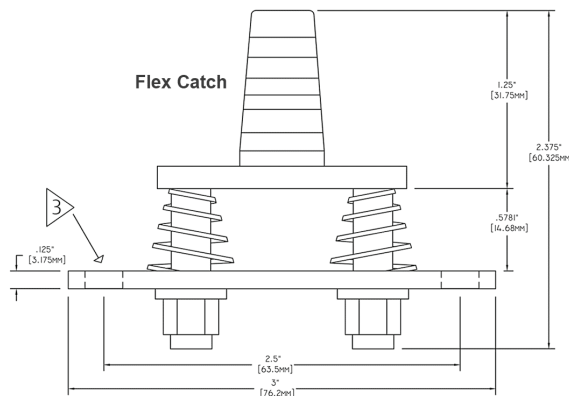
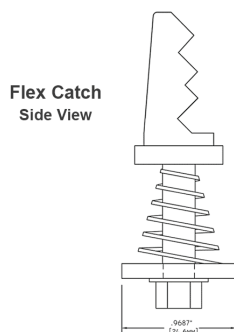
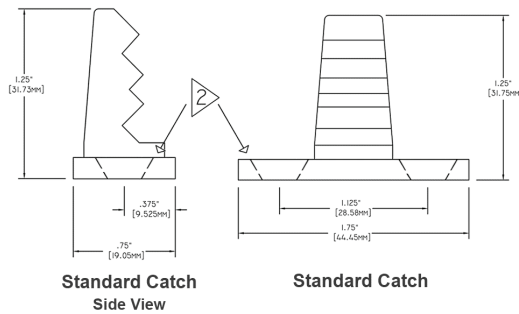
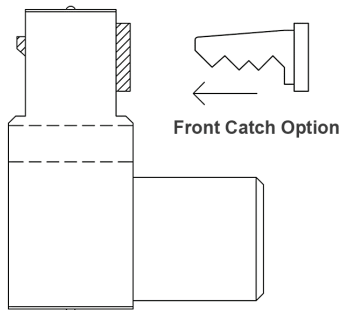
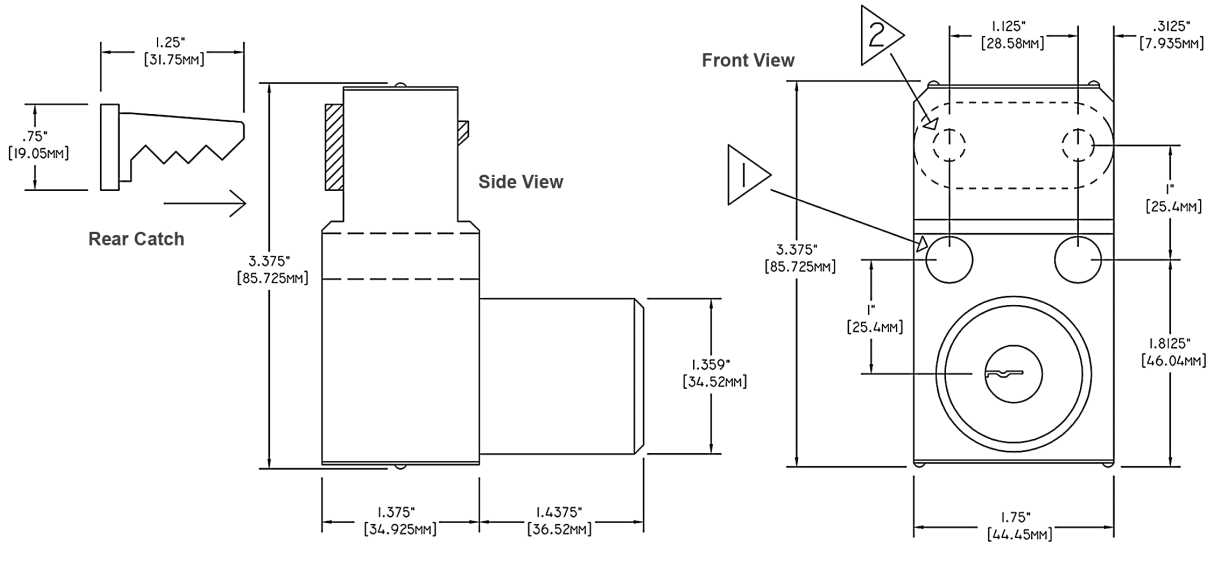


Part of the
Sentric Group

DRAWING

Dimensions: in inches

SD Series Type DC



NOTES:

- 1) 0.4062" (10.32mm) Holes for Mounting Bolts (2 Holes)
- 2) 0.277" (7mm) Countersunk Holes (2 Holes) in Standard Catch
- 3) 0.277" (7mm) Holes for Mounting Bolts (2 Holes) in Flex Catch

Type DC Access Interlock

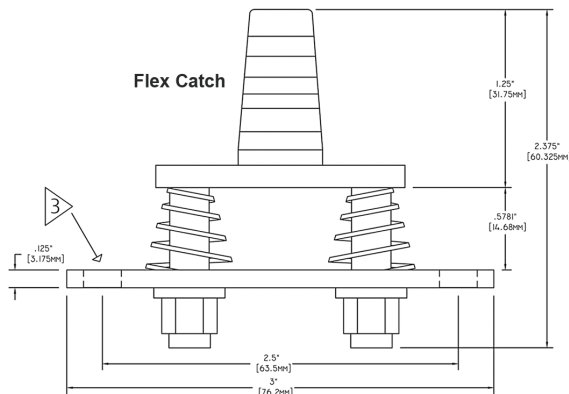
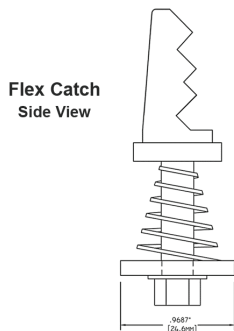
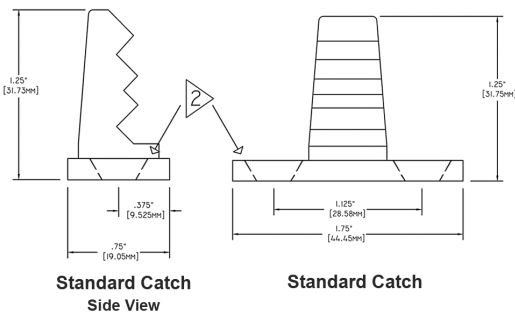
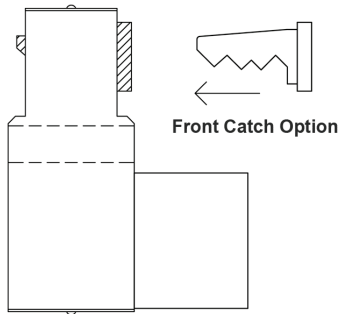
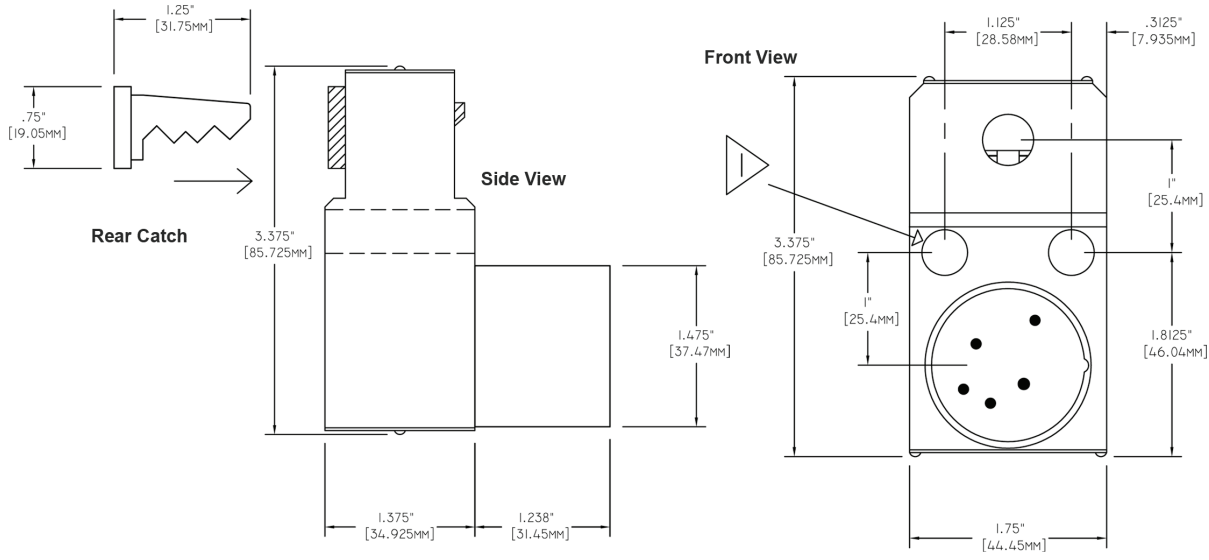


Part of the
Sentric Group

DRAWING

Dimensions: in inches

HD Series Type DC



NOTES:

- 1) 0.4062" (10.32mm) Holes for Mounting Bolts (2 Holes)
- 2) 0.277" (7mm) Countersunk Holes (2 Holes) in Standard Catch
- 3) 0.277" (7mm) Holes for Mounting Bolts (2 Holes) in Flex Catch

Type DC Access Interlock



Part of the
Sentric Group

ORDER INFORMATION

	1	2	3	4	5	6	7	8	9
Part number		D	C						

1	Series	K = SD Series (brass)		S = HD Series (stainless)
4	Catch Entry Point	R = Rear Catch (normal)	F = Front Catch	
5	Catch Type	1 = Standard Catch	2 = Flex Catch	
6	Stamp Key Interchange max. 5 alphanumeric characters	– = No S = Yes	Stamp Key interchange only available for HD series when protective Flip Open Cover is added	
7	Protective Covers see protective covers data sheet	– = No C = Push On F = Flip Open	– = No F = Flip Open with LOTO provision	
8	Mounting Bolts see mounting bolt data sheet	– = No	T = Tamperproof	
9	Opposite Hand	– = No H = Opposite Hand	Opposite hand not available for HD Series	

Type DC Access Interlock



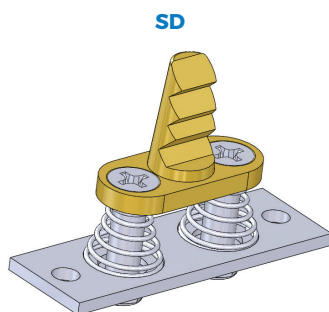
— Part of the —
Sentric Group

ACCESSORIES

Flex Catch

The Flex Catch for the Type DC would be used to allow for greater forgiveness when mounted on an ill-fitting door.

To order with the single cylinder Type DC, indicate the number "2" in column 5 of the Type DC ordering guide



HD

Not applicable

CONTACT INFORMATION

The Kirk Key Interlock Company LLC

9048 Meridian Circle NW, North Canton, OH 44720, USA

Toll Free: +1 800-438-2442 | **O:** +1 234-209-9301 | **F:** +1 330-497-4400

Quotes & Inquiries: sales@kirkkey.com | PO Submission & Orders: orders@kirkkey.com



www.kirkkey.com

U-Type DC-E-01 (10-22)