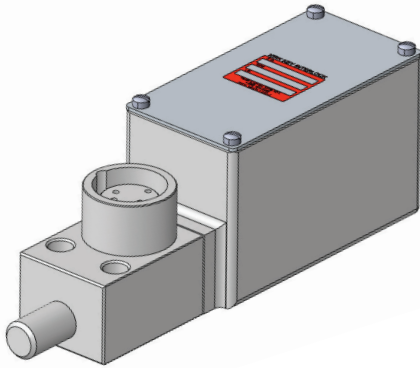


TYPE K Auxiliary Switch



Part of the
Sentric Group



The KIRK K auxiliary switch is a quick-make, quick-break device capable of handling relatively large currents. The toggle switch responds to the movement of the lock bolt as it travels $\frac{3}{4}$ ". The Type K switch is a DP/DT switch with ratings of 10A 25VAC/VDC or 15A 15VAC/VDC and is UL Listed and CSA approved.

The Type K auxiliary switch can be mounted on the following interlocks: Type F, Type B, Type T, Type D.

USAGE

KIRK Type K switch should be used on equipment directly engaging with control circuitry. KIRK switch interlocks ensure that once the equipment power is isolated by the switch interlock as defined by the end user's safety process and following the operations of the interlock, the control circuitry cannot be re-energized until the full sequential procedure is reversed.

Note: The Type K switch remains in its full position until the locking bolt has travelled the full $\frac{3}{4}$ " distance to its second position. The Type K auxiliary switch does not provide an indication as to the initial movement of the locking bolt.

No hazardous substances were used in the manufacturing of the product. The product can be disposed of in standard waste receptacles.

INSTALLATION

The KIRK Type K auxiliary switch is mounted directly to the specified KIRK interlock as ordered. Proper installation of KIRK interlocks is a critical element of a key interlock system. After installation of the interlocks, the complete interlock system should be tested sequentially by person(s) familiar with the entire system, the key sequence, and its intended purpose. Any problems or discrepancies must be corrected prior to energization.

SD series (brass) interlocks are supplied with a key in each cylinder. These keys are needed during installation of the interlocks.

HD series (stainless steel) interlocks are not sold with keys. Keys must be ordered separately and may be required during the installation process.



Auxiliary switches cannot be field installed on existing KIRK interlocks



For all interlock systems to maintain system integrity, additional keys must be removed from the system and destroyed or retained by a responsible person. There should only be enough keys to operate the interlock system sequentially. Kirk Key Interlock Company will not be responsible for extra keys left in the interlock system.



All interlocks and interlock systems must be installed by a competent and qualified person who has read and understood these instructions. Please retain this document in your technical files.

TYPE K Auxiliary Switch



Part of the
Sentric Group

MAINTENANCE

There is no additional maintenance to the Type K auxiliary switch.

Kirk key interlocks should be periodically lubricated with a small amount of dry powder graphite. DO NOT use oil or grease of any type as these will collect dirt and impede the proper operation of the lock cylinder.

SD SERIES: Apply a small amount of graphite to the key and insert the key into the lock cylinder. Work the key in an out and turn the key several times in order to distribute the graphite inside the lock cylinder.

HD SERIES: Apply a small amount of graphite behind the inner turn shaft. Insert and turn the key a few times in order to distribute the graphite below the lock cylinder.

KIRK offers a Graphite Lubrication kit (part# GL-1) complete with instructions for use.

Protective covers for most products are also available as accessories. Covers can be utilized to protect the lock cylinders when located outdoors or in a demanding environment.

TECHNICAL DATA

Housing	Aluminum
Type of Mounting	Mounted directly to specified KIRK interlock
Temperature Ratings	-65F to +700F
Ingress Protection	Not applicable - is not compliant with IP65acc. EN 60529
Certifications	Switch is UL listed and CSA approved
Weight	1.5 lbs

* Weight of K switch unit based on switch alone; not mounted to specified KIRK interlock

TYPE K Auxiliary Switch

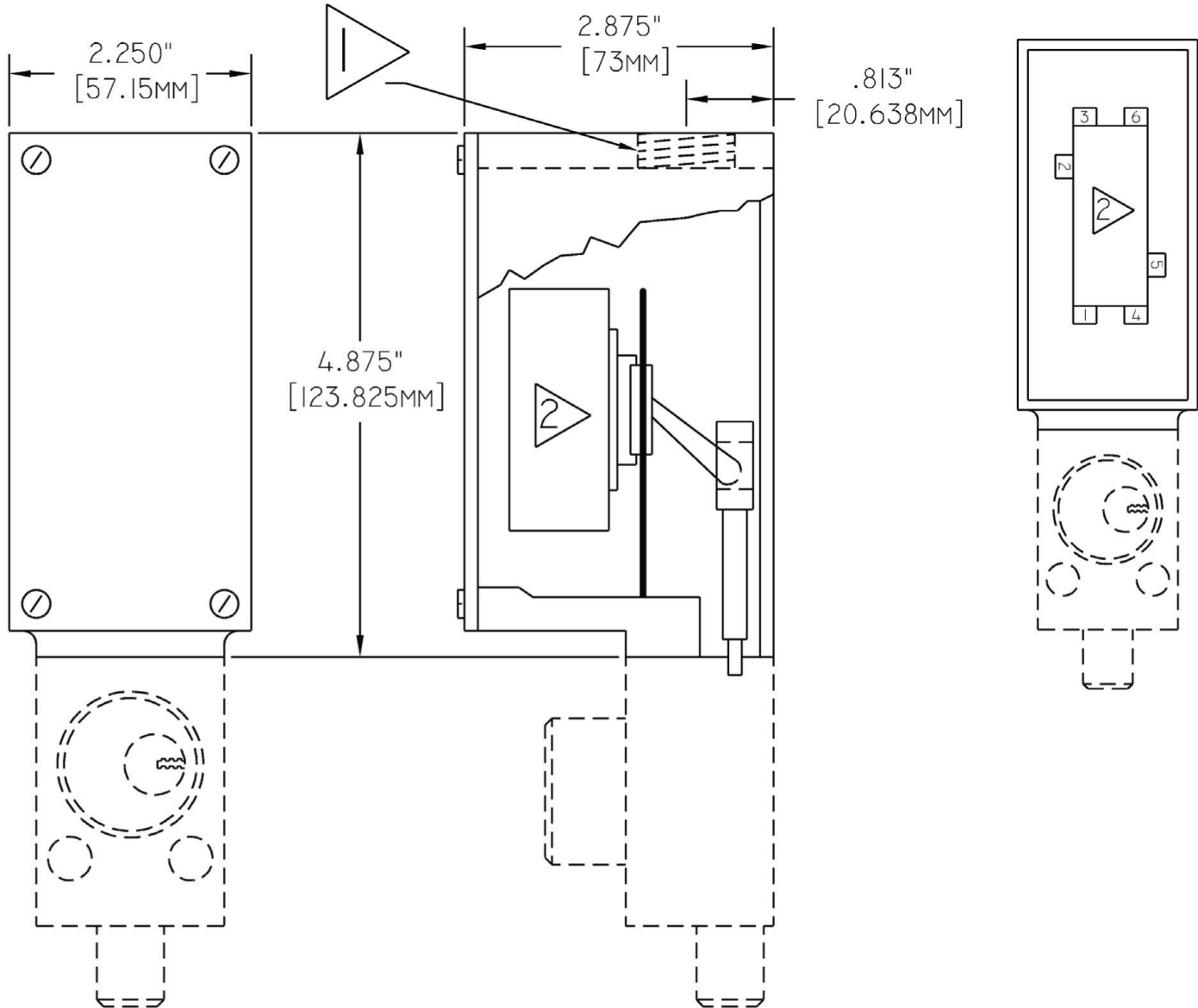


Part of the
Sentric Group

DRAWING

Dimensions: in inches

Type K Auxiliary Switch



1) 3/4" conduit opening.

2) DPDT toggle switch.

- Drawing shown includes K Switch Mounted on SD Series Type F Interlock.

CONTACT ARRANGEMENT:

- Lock Bolt Extended Contacts Closed: 1-2, 4-5
- Lock Bolt Withdrawn Contacts Closed: 2-3, 5-6

TYPE K Auxiliary Switch

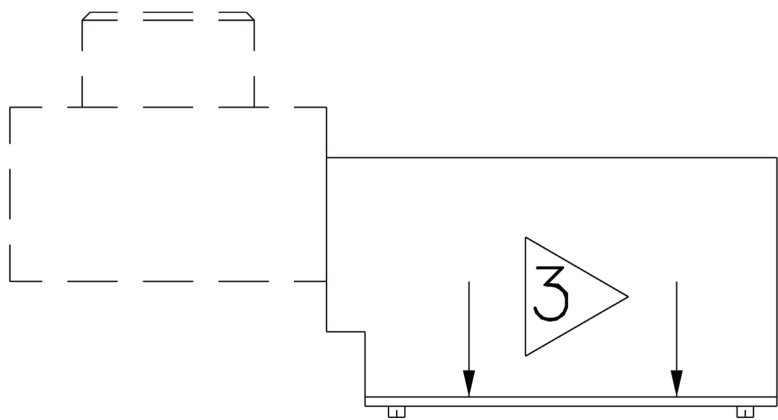
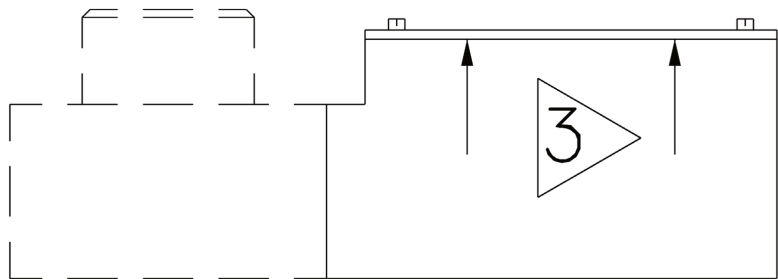


Part of the
Sentric Group

DRAWING

Dimensions: in inches

Type K Auxiliary Switch



TYPE K Auxiliary Switch

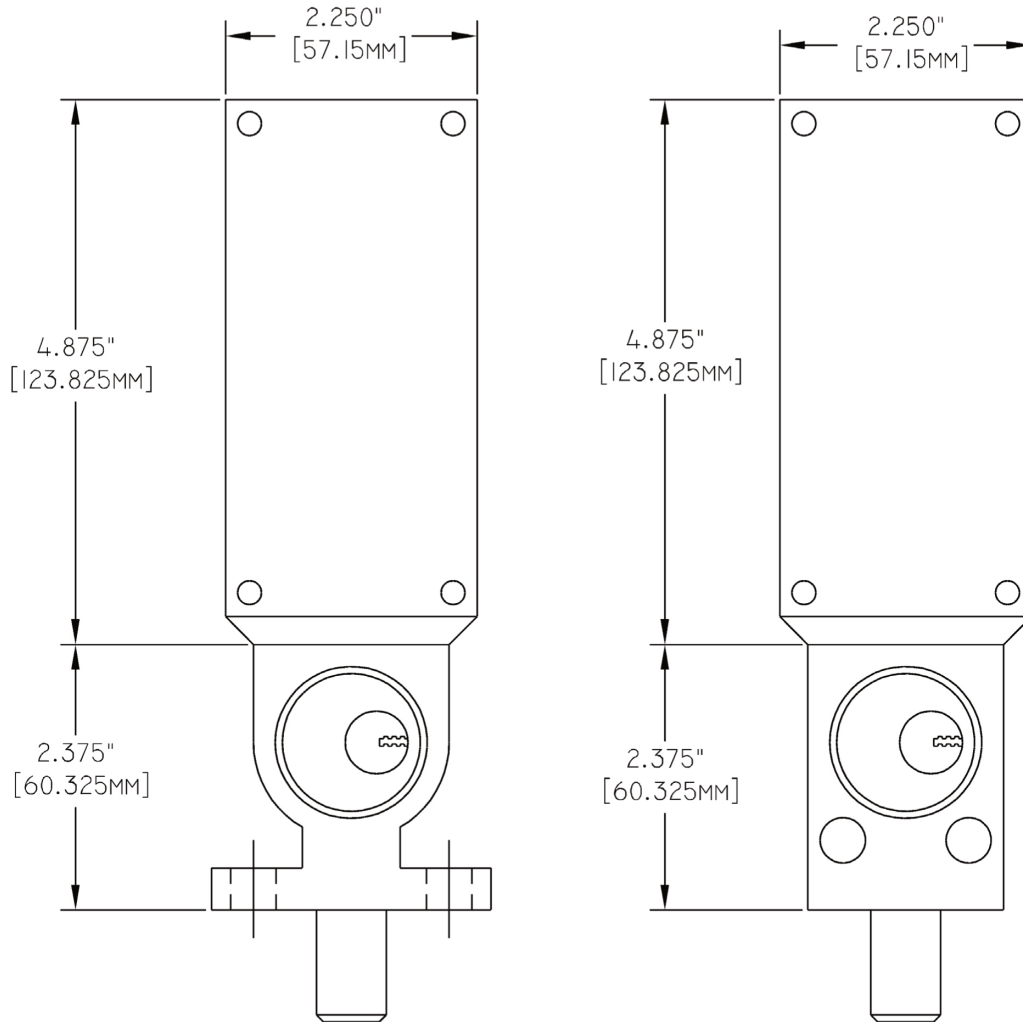


Part of the
Sentric Group

DRAWING

Dimensions: in inches

Type K Auxiliary Switch



ORDER INFORMATION

See ordering guide for specific KIRK interlock to order auxiliary switch options.

CONTACT INFORMATION

The Kirk Key Interlock Company LLC

9048 Meridian Circle NW, North Canton, OH 44720, USA

Toll Free: +1 800-438-2442 | O: +1 234-209-9301 | F: +1 330-497-4400

Quotes & Inquiries: sales@kirkkey.com | PO Submission & Orders: orders@kirkkey.com